

HOLLY GROVE SCHOOL NEWSLETTER



30TH SEPTEMBER 2024



www.holly-grove.lancs.sch.uk / [www.facebook.com/](https://www.facebook.com/HollyGrovePrimarySchool)



We hope you had a great weekend!

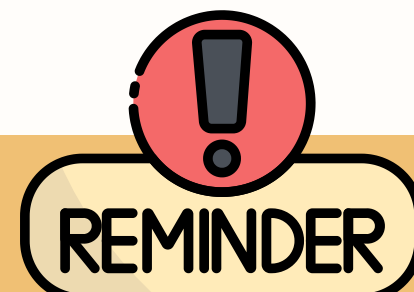
Non Uniform

We have two non uniform days coming up to support our fundraising efforts for the 80s bingo night.

Friday 4th October in exchange for wearing non uniform we kindly ask for donations of chocolates.

Friday 11th October in exchange for non uniform we kindly ask for donations of bottles. This can be anything from shampoo to Champagne, water or wine

Thank you for your support.



REMINDER

Parent's Evening will be held this Wednesday, 2nd October and next Wednesday, 9th October.

We look forward to seeing you all!



Coffee
Morning



We would like to thank everyone that attended our Coffee Morning on Friday. It was great to see so many of you there, raising funds for Rosemere Cancer Foundation. We are delighted to announce that we raised an amazing £195.

Thank you for all your support!

THANK YOU!

 **rosemere**
CANCER FOUNDATION

Reg. Charity No: 1131583





WIN!



Calling all Burnley FC Fans. **Want to win tickets to Burnley v Millwall?** We are raffling off 3 pairs of tickets for the match on Saturday 3rd May 3pm!

Just £1 a number and you could win 2 tickets to this exciting game.

We also have 2 pairs of tickets for Burnley v Leeds on Saturday 25th January, 3pm. These will be available through a silent auction - the two highest bidders will win the tickets. Get your secret bids in for a chance to see this epic clash!

The draw for these will take place on Friday 18th October.

Additionally we are holding another raffle with some amazing prizes including £30 Primark voucher, Pamper Hamper, Afternoon Tea for 2, Free MOT, And more! This raffle is priced at £1 a strip.

Please send your money into school in a sealed envelope and clearly state which raffle you wish to enter. For secret bids please email k.wood@hollygrove.lancs.sch.uk with your bid.



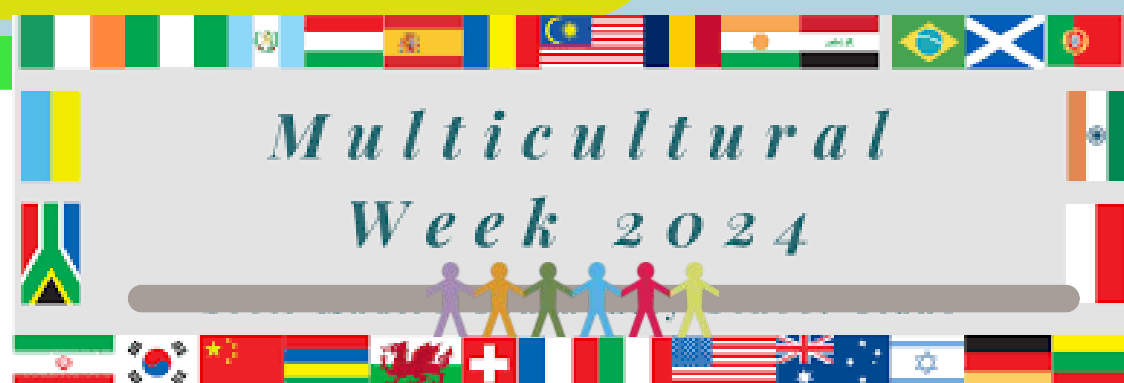
You will shortly be receiving information on how you can order your child's Christmas card that they have designed in school.



Reminder

Just a reminder that our school telephone number changed before the holidays.

If you need to contact school, please call us on 01282 953 710.



Last week at school was a whirlwind as we dove headfirst into Multicultural Week!

It was our chance to jet-set around the globe without leaving the classroom—learning about different countries, cultures, flags, languages, traditional dances, local food and a mountain of fun facts!





Holly Grove is participating in the 'Bag 2 School' initiative! Each pupil and staff member will receive a bag to fill with any of the following items they no longer need: clothes, shoes, handbags, hats, bags, scarves, bras, jewellery, socks, and belts. Please remember, items like duvets, blankets, pillows, cushions, ripped or soiled clothes, batteries, school uniforms, and furniture cannot be accepted.

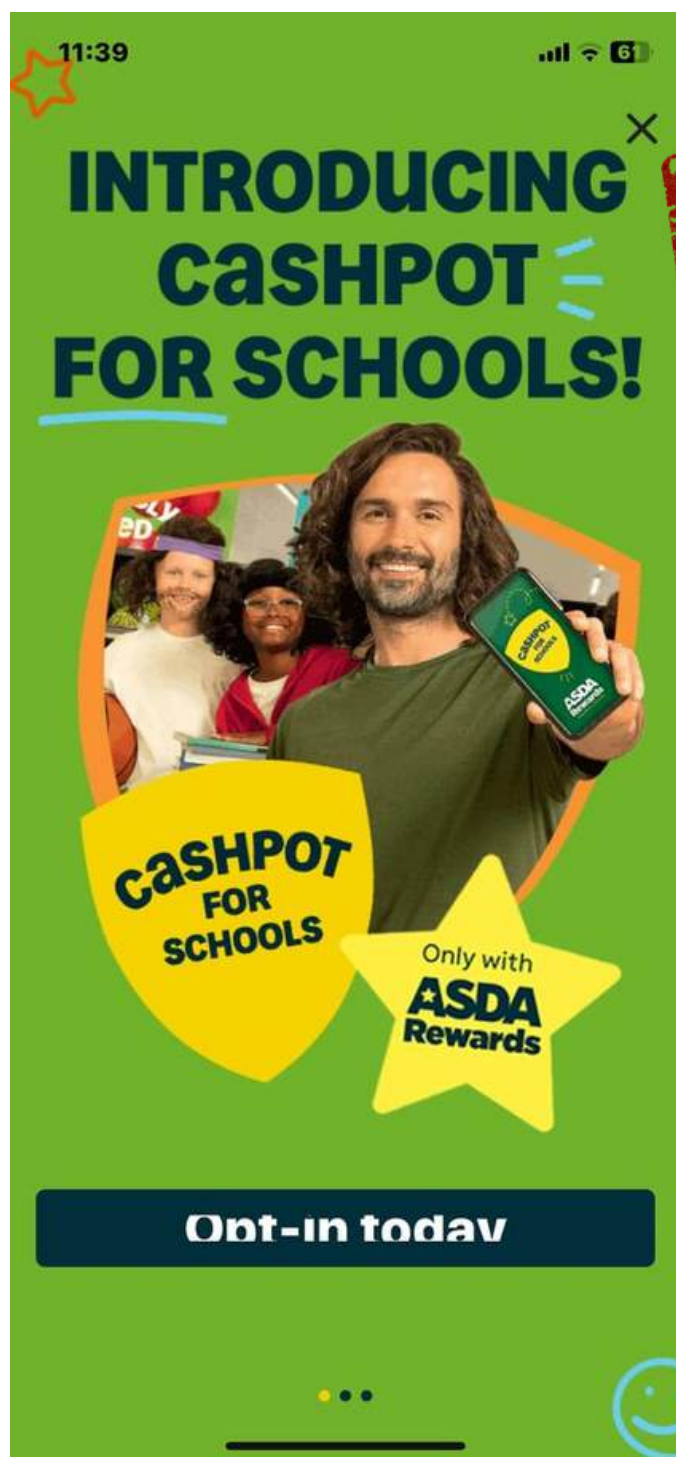


The bags collected will be sent to various locations, including Africa and Ukraine, while others will be recycled or repurposed. Bag 2 School is a fun, free and easy way for us to raise funds, the more bags we send, the more money Holly Grove receives.

You can use your own bag or one of the provided bags, which has been sent home. Please do not bring any bags to school until the collection date on **Thursday, October 10th**, as we won't have space to store them.

www.bagtoschool.com

If you're doing a clear-out, we encourage you to bag up those items and contribute! Thank you for your support!



If anyone shops at ASDA please login to your rewards app and choose Holly Grove Primary School to receive 0.5% of your shop. This is in addition to your own personal cashpot. Please share with your friends and family

only 7 numbers left



100 Club renewals are due by 31st. October 2024

Join the Holly Grove School 100 Club and make a difference while having fun!

For just £24 a year (that's only £2 a month!), you could win BIG! Each month, we have TWO lucky winners: £25 £50

And don't miss our special draws at Christmas and Summer for even bigger prizes: £150 £50

The 100 Club is a private lottery open to all parents, staff, governors, and friends of Holly Grove School. Your participation supports the Georgia Fourie Butterfly Fund, which helps provide essential equipment, resources, and opportunities for our pupils.

It's a fantastic way to support our school and enjoy a little flutter at the same time!

Ready to join the fun? Drop us a message to sign up or for more details!

IMPORTANT

Please can we ask that no small toys that may cause a choking hazard, particularly those that can be chewed apart or contain small beads, be sent in with children, from home. Soft toys/blankets/comforters are fine, however the small rubbery or bead filled toys can cause a significant safety risk for pupils, particularly those with Pica. Thank you for your support and understanding with this.

Stay and Play

Here is a list of each class' stay and play sessions for the Autumn Term. You are very welcome to attend the session of the class your child belongs to.

Stay and Play Afternoons – Autumn Term 1.30-2.30pm

| | |
|------------------|---|
| Aisling's Class | Wednesday 16 th October |
| Katie's Class | Wednesday 16 th October |
| Samantha's Class | Thursday 10 th October |
| Josh's Class | Tuesday 12 th November |
| Rebecca's Class | Tuesday 12 th November |
| Laura's Class | Thursday 3 rd October |
| Courtney's Class | Wednesday 30 th October |
| Adam's Class | Thursday 17 th October |
| Julie's Class | Wednesday 25 th September (9.30am-10.30am) |
| Jenny's Class | Wednesday 30 th October |
| Alex's Class | Wednesday 20 th November |
| Michael's Class | Thursday 14 th November |



The Hairdresser will be in school on Monday 14th October and Tuesday 15th October 2024.

If you would like your child to have their haircut, please respond to the School Spider message with their name and include any requirements.

The cost of the haircut is £10.00.



Staff Development

Wednesday 2nd October
3pm-5:30pm

Parent's Evening

You can access all our policies and our privacy notices on the school website.



www.holly-grove.lancs.sch.uk

HAPPY BIRTHDAY

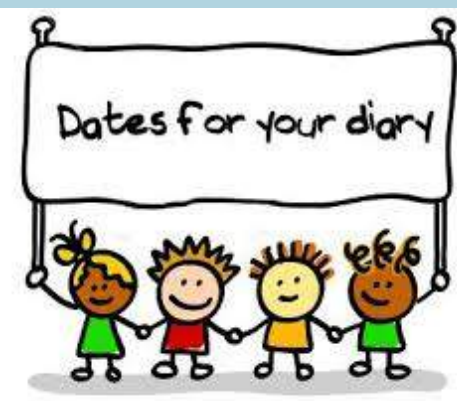


STAFF

Laura.M
Gemma

CHILDREN

Mahima
Ebony
Amna
Menaal
David.D



Tuesday 1st October

Wednesday 2nd October

Friday 4th October

Wednesday 9th October

Monday 14th October

Tuesday 15th October

Harvest

Parents Evening

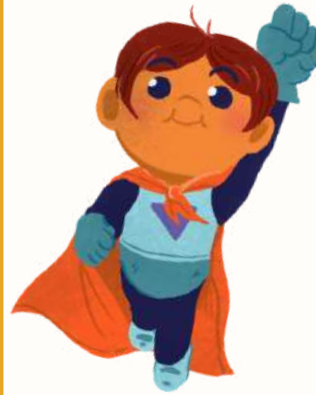
Non Uniform Day

Parents Evening

Hairdresser

Hairdresser

HOLLY GROVE HEROES



Aisling's Class - Roseabelle

Katie's Class - Zack

Samantha's Class - Mason

Rebecca's Class - Tia

Laura's Class - Archie

Adam's Class - Minnie

Julie's Class - Sophie

Michael's Class - Varian

Courtney's Class - Logan

Josh's Class - Nukhba

Alex's Class - Shayaan

Jenny's Class - Theo.S



**£10 per
day
10am - 2pm**

**October
21st - 22nd**

HOLIDAY CLUB GROVE

**Sponsored by
Rock FM**

**cash for
kids**





Lancashire and
South Cumbria
Integrated Care Board

YOUR

health. future. say.

Have your say on the future of health and care in your area and the whole of Lancashire and South Cumbria.

**Monday,
21 October 2024**

at Daneshouse Community centre
Burnley
4.30pm-6.30pm.

For more information
and to book your place
scan the QR code or
visit:



www.lancashireandsouthcumbria.icb.nhs.uk/roadshows

WEA

Adult Learning
Within Reach



ESOL Classes

Enrolments for classes:

Friday 4th October- 0930-1330

Friday 1st November 0930-1330

Friday 6th December 0930-1330

Enrol on:

At:

The Atrium, Burnley Campus, Barden Lane, Burnley,
BB10 1JD.

**PLEASE BRING ID DOCUMENTS & EVIDENCE OF
INCOME/BENEFITS.**



East Lancashire
Learning and Information Exchange

Children and Family Wellbeing Service Burnley September - December 2024 timetable (term time)

| Monday | Tuesday | Wednesday | Thursday | Friday | Saturday |
|---|---|---|---|---|--|
| <p>Thrive - 11am-1pm Downtown (Town Centre above New Look)</p> <p>A variety of skills, employment and training advice all available in one place. If you are aged 16-24 and looking for help and advice come along and meet with a variety of our partners who have expertise in helping young people take their next steps.</p> <p>Step into Employment 10am-1pm Downtown (Town Centre above New Look)</p> <p>Support available with your employability needs. From support with CVs, to job search, and interview techniques.</p> <p>LSCFT Key Working Weekly Drop in 10.00am-12noon Burnley Wood Family Hub</p> <p>Advocacy Focus 10am-2pm 16c Hargreaves Street, Burnley Support for individuals facing health and social care challenges and assistance, housing, benefits, access to training, education, and employment.</p> <p>Infant Massage 1.00pm-2.00pm Tay Street Family Hub, to book your place call 01282 470707</p> <p>Baby and You 1.15pm-2.45pm The Chai Centre</p> | <p>Chat Play Read 9.30am-11.00am Tay Street Family Hub</p> <p>Advocacy Focus 10am-2pm 16c Hargreaves Street, Burnley Support for individuals facing health and social care challenges and assistance, housing, benefits, access to training, education, and employment. Our community team is on hand to provide 1-1 advocacy support for a range of issues and is here to help you live the life you want to live.</p> <p>Infant Massage 11.00-12noon Downtown - to book your place call 01282 470707</p> <p>Craft & Chat 12.30pm-1.30pm Downtown (Town Centre above New Look)</p> <p>Craft session for children and parents, term time only</p> <p>Busy Bees 1-2.30pm Parent/carer support group, for those who have children with additional and/or behavioural needs.</p> <p>POWAR (SEND Youth Participation Voice) Youth Voice and Influence group to provide a space for young people with SEND to raise issues of importance. 8-15 yrs. 4.30-5.00pm 16-25 yrs 6.30-8.00pm.</p> | <p>Citizens Advice 9am-12noon Downtown Finance and benefits advice Living Well Check</p> <p>Employability drop-in 9.30am-11.30am - Burnley Wood Family Hub 1.00pm-2.30pm - Tay Street Family Hub</p> <p>Strong Together Domestic abuse support drop-in 10.00am-11.30am Downtown (Town Centre above New Look)</p> <p>Burnley, Leisure and Culture - Healthy weight Management (Adults) 10.00am-11.30am Burnley Wood Family Hub</p> <p>Chat Play Read 10.00am-11.30am Burnley Campus</p> <p>Advocacy Focus 10am-2pm 3rd Wednesday of every month Support for individuals facing health and social care challenges and assistance, housing, benefits, access to training, education, and employment. Downtown (Town Centre above New Look)</p> <p>Smoke Free Lancashire stop smoking drop-in 10.30am-3.30pm Tay Street Family Hub</p> <p>Triple P GROUP To book your place call 01282 470707 12.30pm-2.30pm Burnley Wood Family Hub</p> <p>One Stop Shop Health Visitor Clinic, Baby and You and Hear Now Family Support drop-in 1.00pm-3.00pm Tay Street Family Hub</p> <p>Development Matters 1.15pm-2.15pm Burnley Wood Family Hub</p> <p>Mini Move and Groove 2.15-3.15pm Burnley Wood Family Hub</p> <p>Colorful Footsteps 4.00pm-5.00pm Burnley Wood Family Hub 5-11 yrs. S.E.N.D group with parents Please note the change of venue</p> | <p>Development Matters 9.30am-10.30am The Chai Centre</p> <p>Mini Move and Groove 10.30 - 11.30am The Chai Centre</p> <p>Parents-to-be - last Thursday of the month 9.30am-11.30am Supporting parents-to-be in getting ready for baby To book your place call 01282 470707</p> <p>Hear Now Family support drop-in 10.00am-12noon New Neighbours Together St John's Church Hall, off Ivy St, Burnley, BB10 1TD</p> <p>Baby Clinic by appointment only 10.00am-12noon Burnley Wood Family Hub</p> <p>Messy play alongside Baby Clinic 10.00am-12noon Burnley Wood Family Hub</p> <p>Advocacy Focus 10am-2pm 16c Hargreaves Street, Burnley Support for individuals facing health and social care challenges and assistance, housing, benefits, access to training, education, and employment. Our community team is on hand to provide 1-1 advocacy support for a range of issues and is here to help you live the life you want to live.</p> <p>Baby and You 1.15pm-2.45pm Lightenhill Centre</p> <p>Smoke Free Lancashire stop smoking drop-in 1.30pm-4.00pm Burnley Wood Family Hub</p> | <p>Development Matters 9.30am-10.30am Tay Street Family Hub</p> <p>Chat Play Read 9.30am-11.00am The Chai Centre</p> <p>Baby and You 9.30am-11.00am Burnley Wood Family Hub</p> <p>ICANN 10am-2pm Downtown Need help with a benefits form. Appointments available. PIP * ESA50 * UC50 * CHLD DLA * AA</p> <p>Mini Move and Groove 10.30am-11.30am Tay Street Family Hub</p> <p>NEET Bus pass by Appointment only 12.00-4.00pm A session aimed at young people aged 16-18 not currently accessing education, training or employment who needs transport support to access these opportunities. Burnley Zone and Family Hub To book a slot please email cftwburnleyyouthwork@lancashire.gov.uk</p> <p>Lactation Clinic By appointment only 1.00-4.00pm Tay Street Family Hub</p> <p>N.C.T. Infant Feeding Support group 1.00-2.30pm Tay Street Family Hub</p> | <p>M.A.T.C.H. 10.00am-12noon Men and their children group for dads, grandads, and male carers with their children. Breakfast and activities suitable for ages 0-11 years old. 1st Saturday in every month. Burnley Wood Family Hub</p> <p>Include Me Session for SEN children and their families. 10am-12noon Burnley Wood Family Hub 1st Saturday in every month.</p> <p>Trek Talk for men and their children 10.00am-12noon 3rd Saturday of every month Themed monthly walks, from Burnley Wood Family Hub 1 hour walk followed by drinks and snacks in the Centre</p> <p>Family Play Saturday 10.00am-12noon 3rd Saturday in the month Everyone welcome children 0-11 with parents</p> <p>Burnley Wood Family Hub</p> <p>Children and Family Wellbeing Service Welcome Form</p> |

For services and support available for young people aged 12-19yrs+ see Burnley Youth Zone on Facebook or e mail cftwburnleyyouthwork@lancashire.gov.uk

| | | | | | | | |
|---|--|--|--|--|--|--|---|
| Tay Street Family Hub Tay Street Burnley 01282 470891 BB11 4BU | The Chai Centre Hutley Street Burnley 01282 628530 BB10 1BY | Burnley Wood Family Hub 33 Brunswick Street Burnley 01282 470707 BB11 3NY | Whitegate Nursery Victoria Road Padiham 01282 772283 BB12 8TG | Lightenhill Centre Oak Street Burnley 01282 470895 BB12 6QZ | Burnley Zone & Family Hub Whittam Street, Burnley BB11 1LW | Burnley Campus Library Barden Lane Burnley 0300 123 6703 BB10 1JD | Downtown 01282 686402 Burnley Above New Look |
|---|--|--|--|--|--|--|---|

NHS Lets get brushing
It's never too early to start brushing

SCAN FOR MORE INFORMATION

The Children and Family Wellbeing Service would like to introduce a Supervised Toothbrushing Scheme in Nurseries across Lancashire for children aged 2-5 Year olds. If you are a parent/carer of a child who attends Nursery, in one of our first target areas - Pendle, Hyndburn, Preston Or Burnley. Please ask your Nursery if they are taking part. Further information for your child's setting can be gained from Our Oral health Team
Email - letsgetbrushing@lancashire.gov.uk

Hear Now

Free Weekly Drop In Sessions

Come along to access face-to-face advice for a range of community services available including family support

Thursday 10-11am
New Neighbours Together
St John's church hall, off Ivy Street, Burnley BB10 1TD

email: cftwburnleyyouthwork@lancashire.gov.uk
See website for location

Tay Street Family Hub ONE STOP DROP-IN

No appointment needed

Wednesday 1-3pm

- ✓ Baby Clinic with Health Visitor
- ✓ Step and Play activities
- ✓ Hear Now Family Support advice drop-in

Burnley Family Hub

STRONG TOGETHER

Peer Support

friendly, non-judgemental drop-in for advice and support around breaking the cycle of domestic abuse

Every Wednesday 10.15-11am
Downtown (above New Look)

Support! in your journey to work

Webinars

9.30am-11.30am - Burnley Wood Family Hub
1.00pm-3.30pm - Tay Street Family Hub

The DWP Supporting Families Team works in partnership with Lancashire County Council to provide support for local families

Access help with:

- Employment courses
- Career advice
- Prepay a CV
- Interview technique
- Get job ready
- Training to improve skills
- and much more...

Wendy.Nancoff@lancashire.gov.uk
Tel: 0330075840

SPARKLE

FAMILY FUN SESSIONS IN OCTOBER HALF TERM

WATCH OUT FOR MORE INFORMATION ON FACEBOOK - BURNLEY FAMILY HUBS

M.A.T.C.H.
Men and their children

on the 1st Saturday, every month

Join us for breakfast, games & activities suitable for children from birth to 11 years old

No need to book!

We can't wait to see you!
Burnley Wood Family Hub,
Brunswick St, Burnley
BB11 3NY

Please note change of venue

Include Me Family SEN session

Family play session for children with physical, learning, behavioural or emotional difficulties

1st Saturday each month

10am-12noon Breakfast provided

Burnley Wood Family Hub, 33 Brunswick St
Burnley BB11 3NY

FAMILY PLAY SATURDAY

Families with children age 0-11

10am-12noon

Burnley Wood Family Hub

3rd Saturday each month
(No need to book!)

10am-12noon

Burnley Wood Family Hub, Brunswick Street Burnley BB11 3NY

TREK TALK

MONTHLY WALKS FOR MEN AND THEIR CHILDREN

3rd Saturday every month 10am-12noon

1 hour walk followed by drinks and snacks in the Centre

THE COSTS
Walk suitable for families & children
Refreshments provided
Made to Buy & Personalised

AGES 0-11

FREE

walks@burnleyfamilyhubs.com

Kidz^{to}Adultz.

North

Friday 11th October 2024
Manchester Central
Manchester
9:30am - 4:00pm

- ✔ Free entry
- ✔ 100+ exhibitors
- ✔ Fun zone
- ✔ CPD seminars
- ✔ Accessible facilities
- ✔ New parent and carers connection hub



For children and young people with disabilities and additional needs, and the people who support them.



kidzexhibitions.co.uk

Room One

10:00am Understanding Autism and Neurodivergence

Isabelle Green | *Senior Director
Speech and Social Skills
Language*

Robert Smith | *Senior Director
Autism
Programs*

Quinn O'Connell | *Speech and
Clarity*

11:00am All things Support for Learning: Moving beyond solved sitting to a user-centered solution

Drinking Finley | *Chief Director
Lacerte*

12:00pm Transition to adult services for young people with complex neurodisabilities

Rauba Mariani | *Assistant Headteacher
Chelmsford High
Foundation*

1:00pm An audience with the Varzea Side Board

**Ellie
Vide** | *Board Chair*

2:00pm Supporting the mental health of individuals with complex communication needs

Julie Pugh | *Assistant Director of
Engagement & Policy
Westside*

3:00pm Setting up the environment for vision and looking at positive looking for eye health

Emily Fry | *Chief and Founder (part)
Sightline*

Gavin MacComack | *CEO
Positive Eye Unit*

Room Two

Free CPD
seminars for
parents and
professionals

10:00am Risky Business - The benefits of positive risk taking

Amanda Jackson | *Executive Therapist
Specialist
Occupational*

11:00am Inclusion with Feet Training

Debra Richardson | *Executive Training
Specialist
Schools, University
College & Research*

1:00pm Stand With Me: Supported standing for complex postures

Kaylan Cooper | *Physical Therapist
Training Manager
Audio*

3:00pm Elder: Critical Review & Supporting Provision in our Youngster

Henry Dobson | *Executive
Director
Well Health Ltd*

**Kidz
Adultz.**

**CPD
CONFIRMED**

Seminar
Sessions run
concurrently