



Holly Grove School Newsletter

28th November 2022

www.holly-grove.lancs.sch.uk / www.facebook.com/HollyGroveSchool



We hope you had a great weekend!



Holly Grove Christmas Markets

It's just a few days until our Christmas Markets. We hope to see many of you there.

We will have lots of festive stalls, live music, hot food and the chance to win prizes.

Raffle tickets will be on sale on the day but if you can't make it and would like to purchase some tickets they are priced at £1 a strip. Please send your money into school in a sealed envelope and your raffle tickets will be sent home. Please keep hold of these until after the event in case you have won a prize. Prizes include 2 x £100 Burnley FC vouchers that can be spent on tickets, hospitality or the club shop, Tinee Teepees Sleepover setup, Christmas hamper, sweet treat box, cooking hamper, Thornton Hall Farm family pass and more.

We also have Santa's grotto, bottle and chocolate tombola and hot food and drink available on the day.

Thank you for your recent donations of bottles and chocolate for the tombola.

Your support is much appreciated!



WOW!

What an magical holiday, Scarlett and her family had recently to Disney Land, Florida.

Thank you for sharing your wonderful photos with us!

Staff Development/Training

Wed 30th November



Christmas Preparations



Merry Berries



Due to the preparation of the 'Christmas Markets' we will be cancelling Thursday 1st December Merry Berries session. Please let your child's transport know to come and collect your child or please do so yourself.

Sorry for any inconvenience.

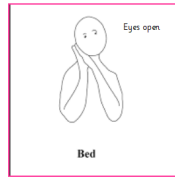
Thank you to Fence Community Library for allowing us to visit and enjoy some of their fantastic books.



Signs of the Week

We are going to be putting different Makaton signs every week onto the newsletter. These are our School Signs of the Week and your child will be practising these during the week in class. These will give you the opportunity to practise different signs with your child at home.

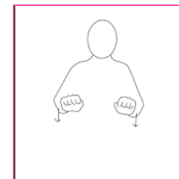
Bed



Bed



Chair



Chair



You can contact school if you need any support using Makaton at home,



Christmas Celebrations 2022

- Friday 2nd December-** Christmas Markets
- Friday 9th December-** Christmas Nativity
- Thursday 15th December-** Christmas Party Day
- Friday 16th December-** Christmas Jumper Day/Carols
Christmas Carols at White Ash



Dates for your diary



- Monday 28th November-** On Body Signing Workshop
- Tuesday, 13th December-** Nibble and Natter/
Family Forum
- Friday 16th December-** Closure after school for Christmas Holidays



Staff - Libby and Kelly.P

Children - Oscar and Grace.C

We would love to share your news on our newsletter.

You can send photos etc.to:

newsletter@holly-grove.lancs.sch.uk

Holly Grove Heroes



Aisling's Class - Amelia

Samantha's Class - Yahya

Laura's Class - Phinn

Libby's Class - Lucas and Varian

Rebecca's Class - Zak

Danielle's Class - Isaiah, Leon and Rohaan

Julie's Class - Samuel

Connor's Class - Leila

Courtney's Class - Manha

Alex's Class - Jacob and Harley



Well Done Everyone!

Funded by



Department
for Education

**NUTRITIOUS
FOOD**



Burnley
.gov.uk

**LOTS OF FUN
FOOTBALL**

**CHRISTMAS
FUN!**

**RUGBY
PANTOS**

winter

Burnley's HAF Programme

FUN

Food Friends

BOOKING NOW!

FREE HOLIDAY ACTIVITIES & MEALS
For children eligible for benefits
related free school meals.

Take part in sport, music, drama, art, cooking and much more
during the Winter 2022 holidays.

Free, nutritious meals will be provided for each session. Have fun with
your friends, learn new skills, gain confidence and get involved!

**Find out more, view the 'What's On' guide and sign up
to receive HAF information at www.burnleyhaf.org.uk**

 /BurnleyHaf



PUPIL HOLIDAY DATES – 2022 / 2023

Autumn Term 2022

Re-open Monday 5 September 2022

Half Term 5 days Monday 24 October
Friday 28 October (inclusive)

Re-open Monday 31 October

Christmas - Closure after school on Friday 16 December 2022



Spring Term 2023

Re-open Thursday 5 January 2023

Half Term 5 days Monday 13 February to
Friday 17 February (inclusive)

Re-open Tuesday 21 February

Easter - Closure after school on Friday 31 March 2023



Summer Term 2023

Re-open Monday 17 April 2023

May Day 1 day Monday 1 May

Half Term 5 days Monday 29 May to
Friday 2 June (inclusive)

Re-open Monday 5 June

Summer – Closure after school on Friday 21 July 2023

